

Taborsky siding profiles installation instructions

The relevant standards in the field also apply, of course, in addition to the installation instructions for the Taborsky siding profiles. Please contact our expert advisers if you have questions. The following installation instructions also provide information regarding delivery, storage, handling and complaints.

1. Delivery, storage, handling

The sidings may only be transported using suitable vehicles. The packs must lie flat and horizontal on the truck bed. Transportation-related complaints are excluded in the event of improper transportation. Delivery time tolerances must be accepted for a delivery which has been organised by Taborsky. Only suitable lifting gear, such as straps, may be used for unloading. The packs may only be lifted at the wooden packaging, otherwise the sidings may be damaged.

Galvanised and polyester-coated construction elements made from sheet steel must be stored with protection against effects of the weather (water, sun, etc.). White rust is excluded from the warranty in the event of delivery of only galvanised components. Appropriate measures, for example inclined pack position, covering with tarpaulins in a manner which ensures that good ventilation can occur, must be taken (condensation). The construction elements should not be stored outdoors under tarpaulins for too long. Storage in enclosed areas is best. We assume no liability for damage resulting from incorrect storage.

Care must be taken when handling the profiles that no deformation of the sidings occurs. The sidings should therefore always be carried upright.

2. Complaints

The sidings must be checked for transport damage immediately upon delivery. Any damage should be noted on the delivery note. All elements should be checked for defects before beginning installation. At least five siding profiles must be hung on an even surface in order to check the overall width (beginning of the first siding to the beginning of the fifth siding). The overall width must be within the permissible tolerance (see tolerances section).

Complaints after installation are excluded. Damaged sidings should not be installed.

3. Tolerances

The Taborsky factory standard for siding profiles is based on EN508. The measurement must be taken 200 mm from the end of the profile in order not to be affected by the folded edge. The standards apply in the non-installed state.

Dimension	Permissible tolerance	Comment	Standard/section
Profile height	+/-2mm		EN508/D1.2
Overall width	+/-2mm	For overall widths of up to 250mm Factory standard	EN508/D1.6
Length	+5/-2	Factory standard	EN508/D1.10
Straightness	2mm/m, max. 10mm		EN508/D1.8
Perpendicularity	0.5% of the overall width		EN508/D1.9
Corrugation depth/or height offset of the joint	+/-2mm	Factory standard	EN508/D1.3
Corrugation of the fastening clips	To be tolerated	Factory standard	

4. Processing of the sidings

Only touch sidings with clean work gloves. Individual profile panels should be carefully carried from the pack to the place of installation. Suitable manual or electric metal shears, nibblers, jigsaws or hand-held circular saws should be selected for cutting the profile sheets. Flying sparks and high heat generation should be avoided (do not use angle grinders). During drilling operations, all debris which occurs should immediately be removed from the surface of the profile. Absolutely no drilling or cutting debris may remain on the surface of the profile. The regulations and safety rules for the installation of steel profile panels must be observed.

5. Substructure

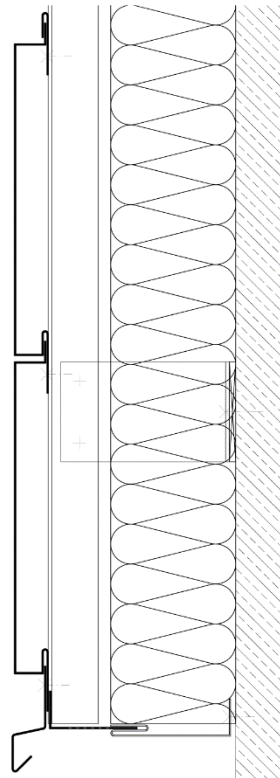
Multi-part substructure systems made from steel or aluminium are particularly suitable as substructures for the Taborsky siding profiles. The minimum support width for the sidings may not be less than 40mm. The substructure must be aligned flush and perpendicular before installation of the siding profiles. A sufficient ventilation gap must be provided for in the planning of the substructure. The substructure should be implemented in accordance with the static measurements and attachment of the sidings to the substructure must be done without tension. Only approved screws may be used for attachment of the siding profiles.

6. Installation

The evenness of the substructure must be checked before installation. The tolerances for the sidings must be checked before beginning installation. The facade must be divided into a grid with equal spacing in order to be able to offset any tolerances in the sidings. The first siding profile must be aligned exactly. The elements must always be attached without tension. This means that a fixed point is placed in the centre of each element and all other screw connections are implemented as sliding points. Slots are punched in the fastening clip in the factory to this end. Only approved screws may be used for attachment. The facade grid should be checked at regular intervals in order to be able to offset unevenness and tolerances. Care must be taken at closures and connections such as pilasters, external corners, internal corners, etc. to ensure that sufficient space is left for the longitudinal expansion of the sidings.

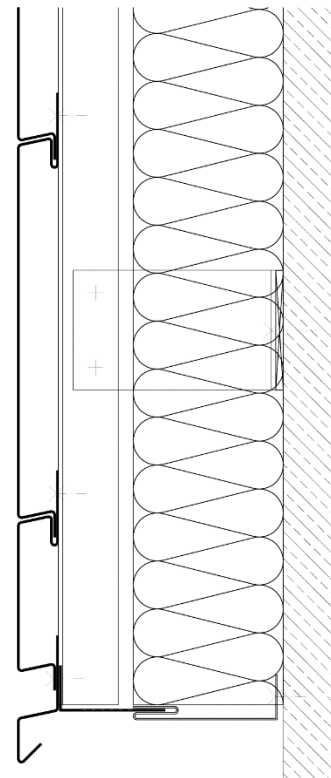
Taborsky siding profiles can be installed horizontally, vertically or at a specific angle. There are two different installation systems for horizontal installation. The VVU system provides the installation direction from bottom to top and the VVO system provides the installation direction from top to bottom for horizontal installation. Shadow joints can also be implemented with the VVO system. The profile shapes of the VVU system can be combined with one another. However, it is not possible to combine the VVU system with the VVO system.

3.2 Waagrechte Verlegung
System VVO



3.2 VVO horizontal installation system

3.1 Waagrechte Verlegung
System VVU



3.1 VVU horizontal installation system

After installing the siding profiles, the protective film must be removed immediately. Later removal may cause problems owing to UV radiation.